







**Legend**

- Third Quarter 2022 250 mg/L Sulfate Plume
- Concentration Tailing Storage Area (CTSA)
- Highway
- International Border



**Notes:**  
 Projection: UTM Zone  
 12N NAD83

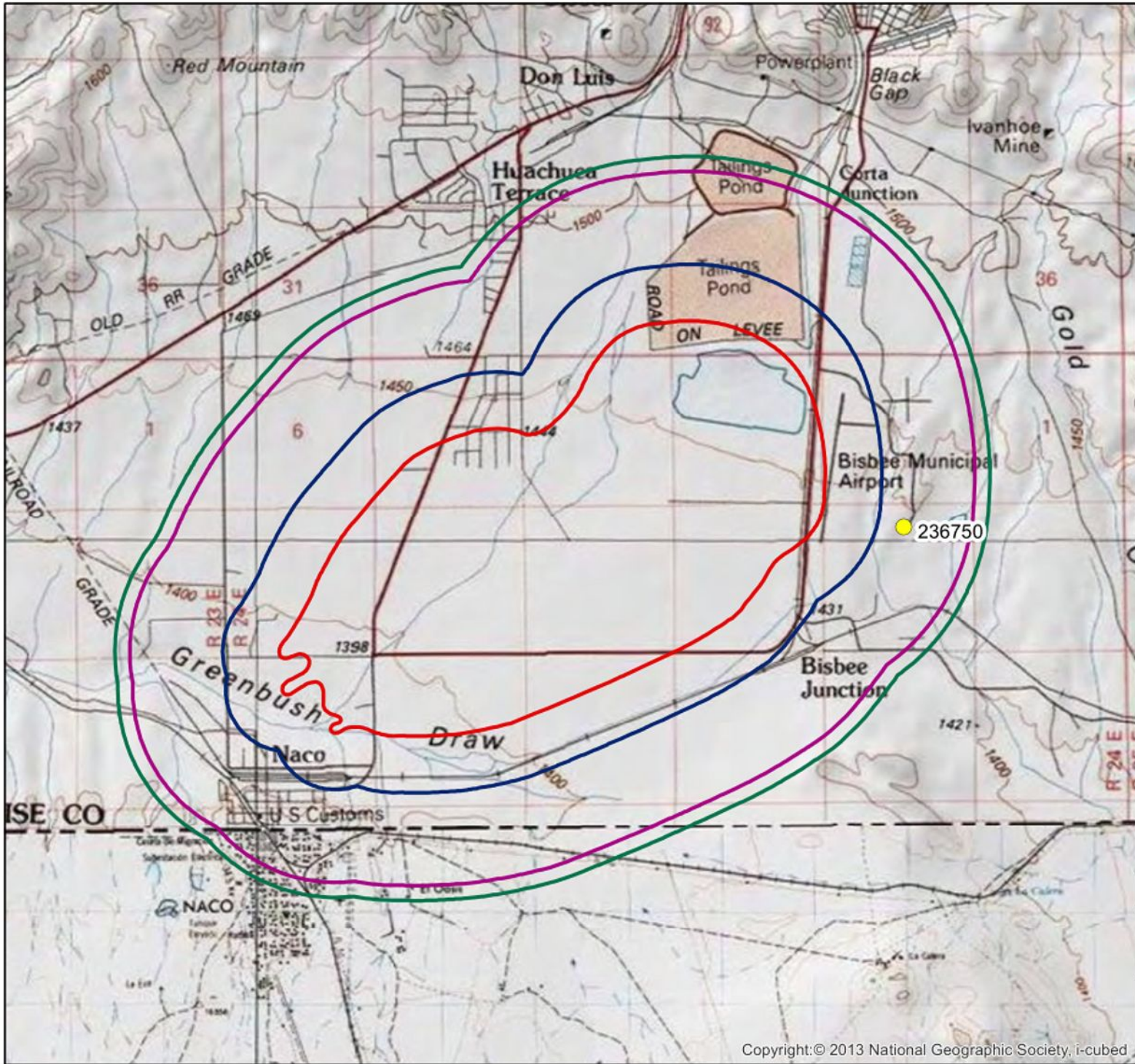
Date	1/13/2023	File ID	055038-585
------	-----------	---------	------------



**FIGURE D.1**  
**Project Location Map**

Source: Esri, Maxar, GeoEye, Earthstar Geographics, CNES/Airbus DS, USDA, USGS, AeroGRID, IGN, and the GIS User Community





**Legend**

- New Well Record
- ▭ Third Quarter 2022 250 mg/L Sulfate Plume
- ▭ 2,000 Foot Buffer
- ▭ 1 Mile Buffer
- ▭ 1.1 Mile Buffer



**Notes:**

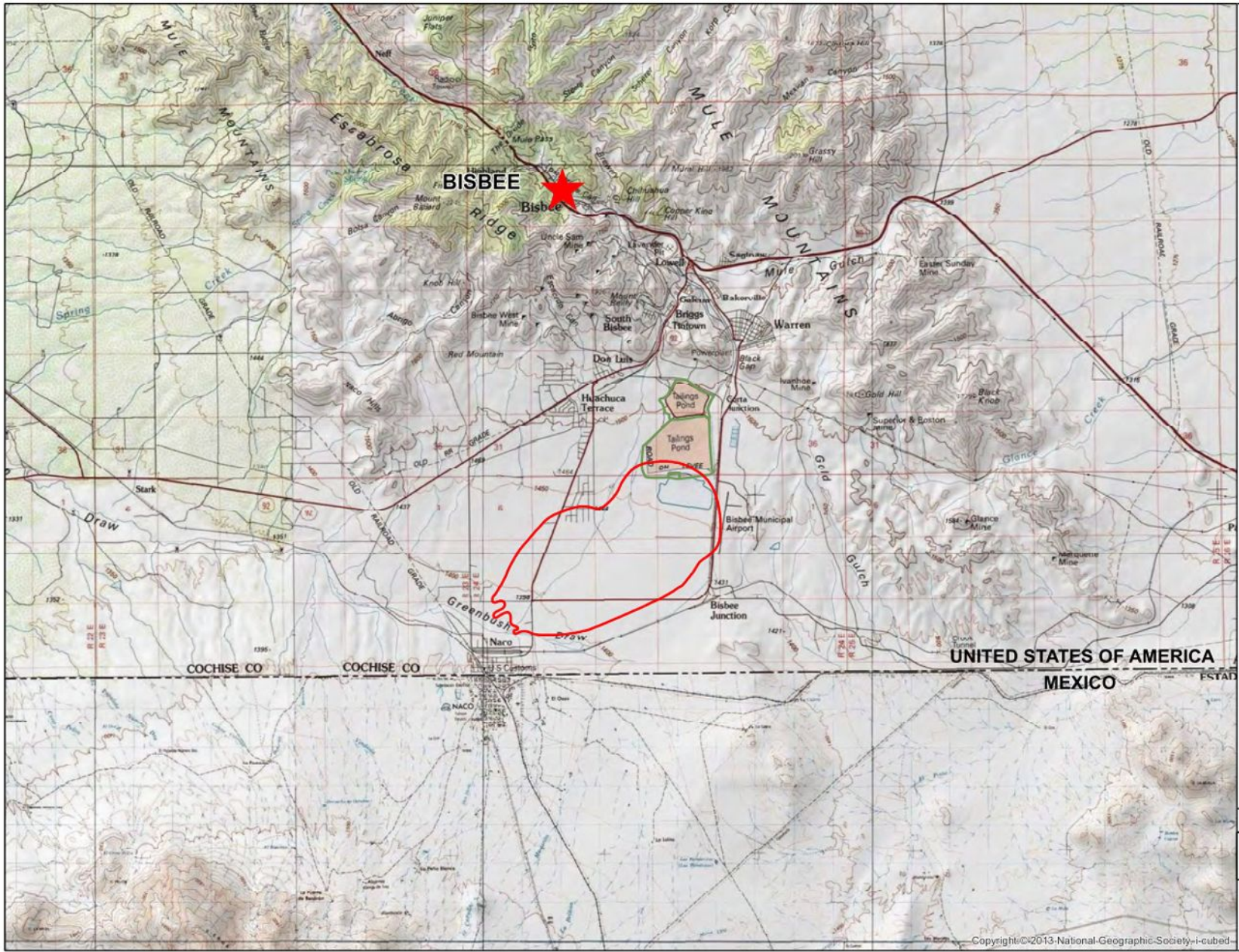
Projection: UTM Zone  
 12N NAD83  
 mg/L = milligrams per liter

Date	1/13/2023	File ID	055038-584
------	-----------	---------	------------



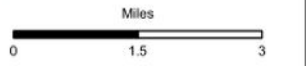
**FIGURE D.2**  
 Well Search Area  
 and New Well Registration





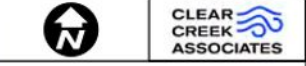
**Legend**

- CTSA Facility
- Estimated 250 mg/L Sulfate Concentration Contour for Third Quarter 2022



Notes:  
 Projection: UTM Zone 12N NAD83

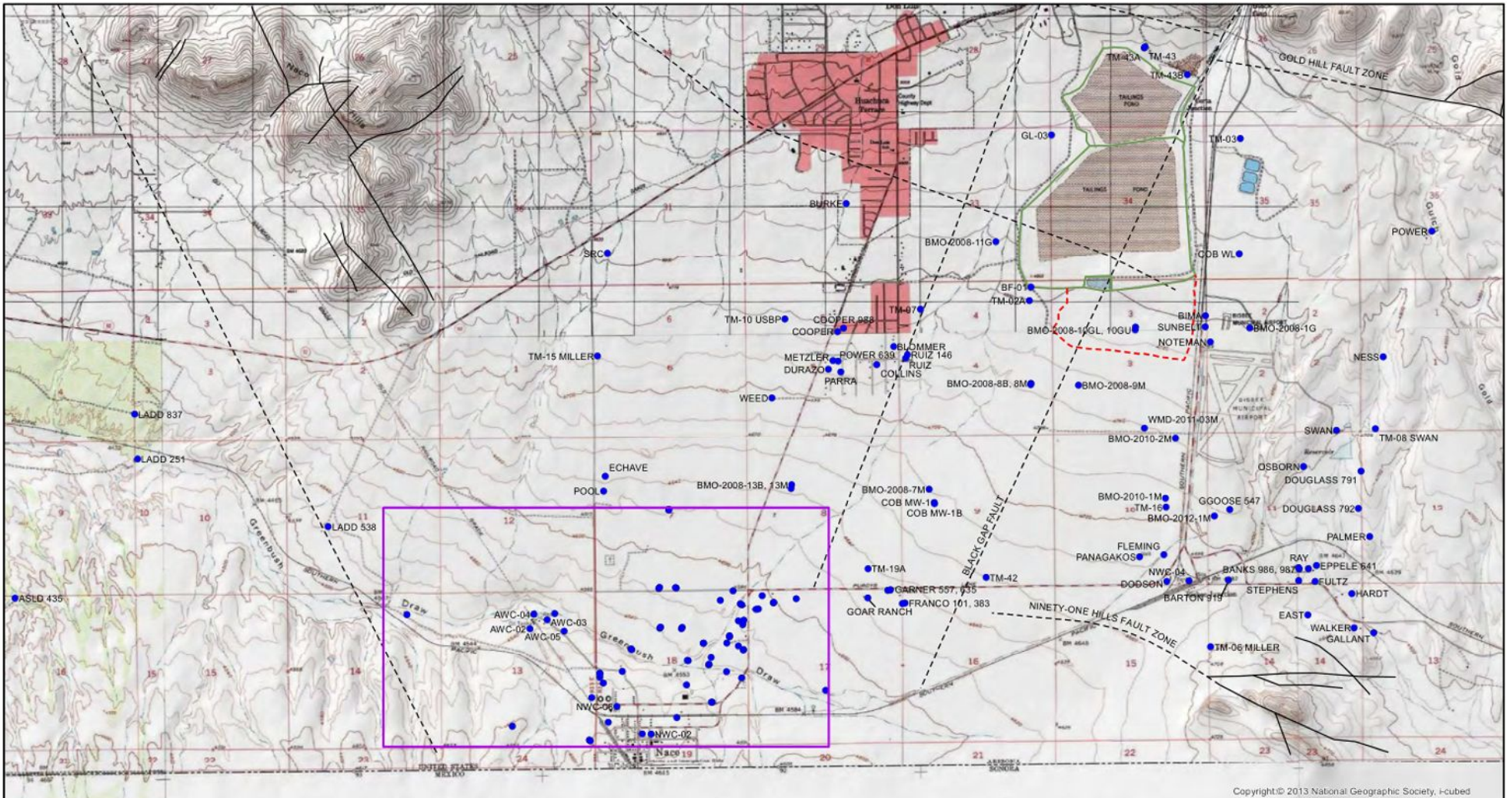
Date: 1/25/2023      File ID: 055038-580A



**FIGURE 1**  
**PROJECT LOCATION MAP**

Copyright © 2013 National Geographic Society - i-cubed

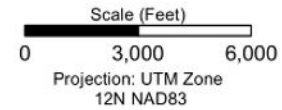






Copyright © 2013 National Geographic Society, f-cubed

**Legend**

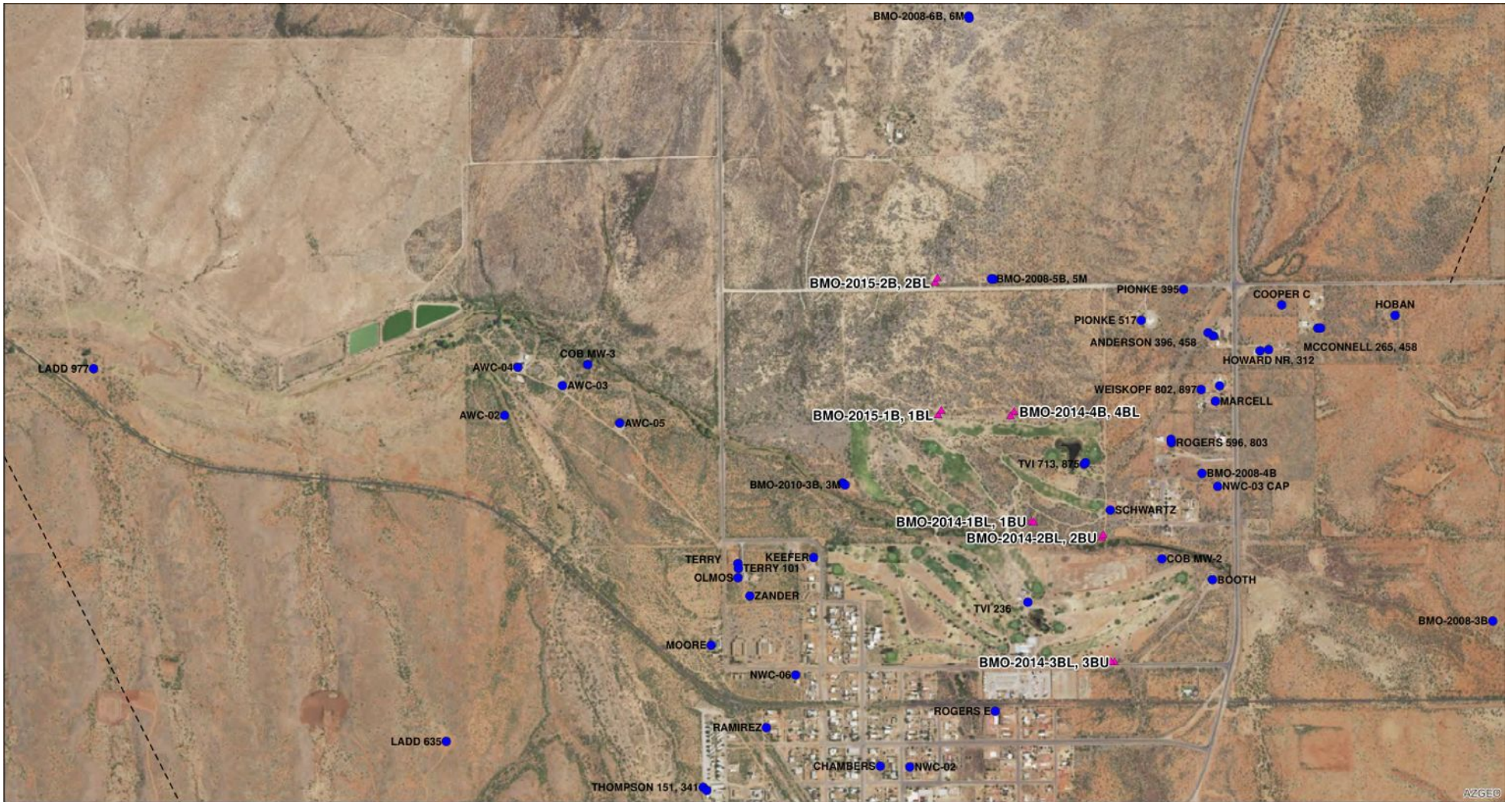
- Monitoring Location
- ▭ Former Evaporation Ponds
- ▭ CTSA Facility
- Fault (dashed where inferred)



Date: 1/31/2023	File ID: 055038-568
	

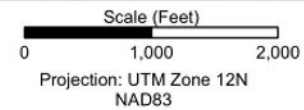
**FIGURE 3  
GROUNDWATER  
MONITORING LOCATIONS**





**Legend**

- ▲ Expanded Goundwater Monitoring Program Well
- Existing Well

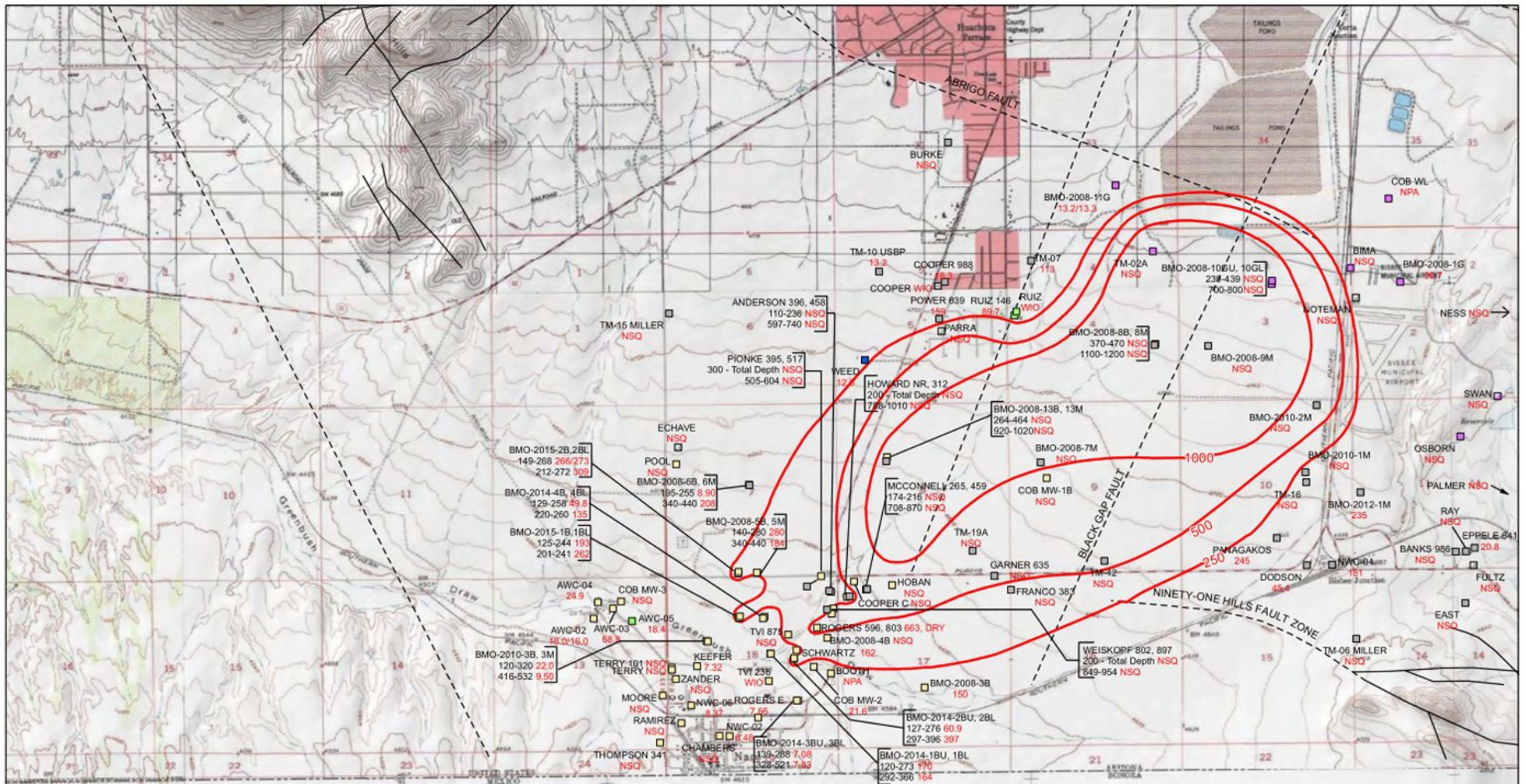


Date: 12/21/2021	File ID: 055038-569

FIGURE 4  
NACO AREA  
WELL SITES

AZGEO





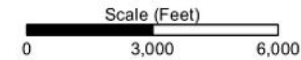
Copyright © 2013 National Geographic Society, i-cubed

**Legend**

- NWC-02 Well ID
- 8.48 SO4 Concentration (mg/L)
- Duplicate results separated by "\*"
- SO4 Concentration Contour
- Fault (dashed where inferred)
- Co-located Wells
- Well ID
- Screen (ft bls) Sulfate Concentration (mg/L)

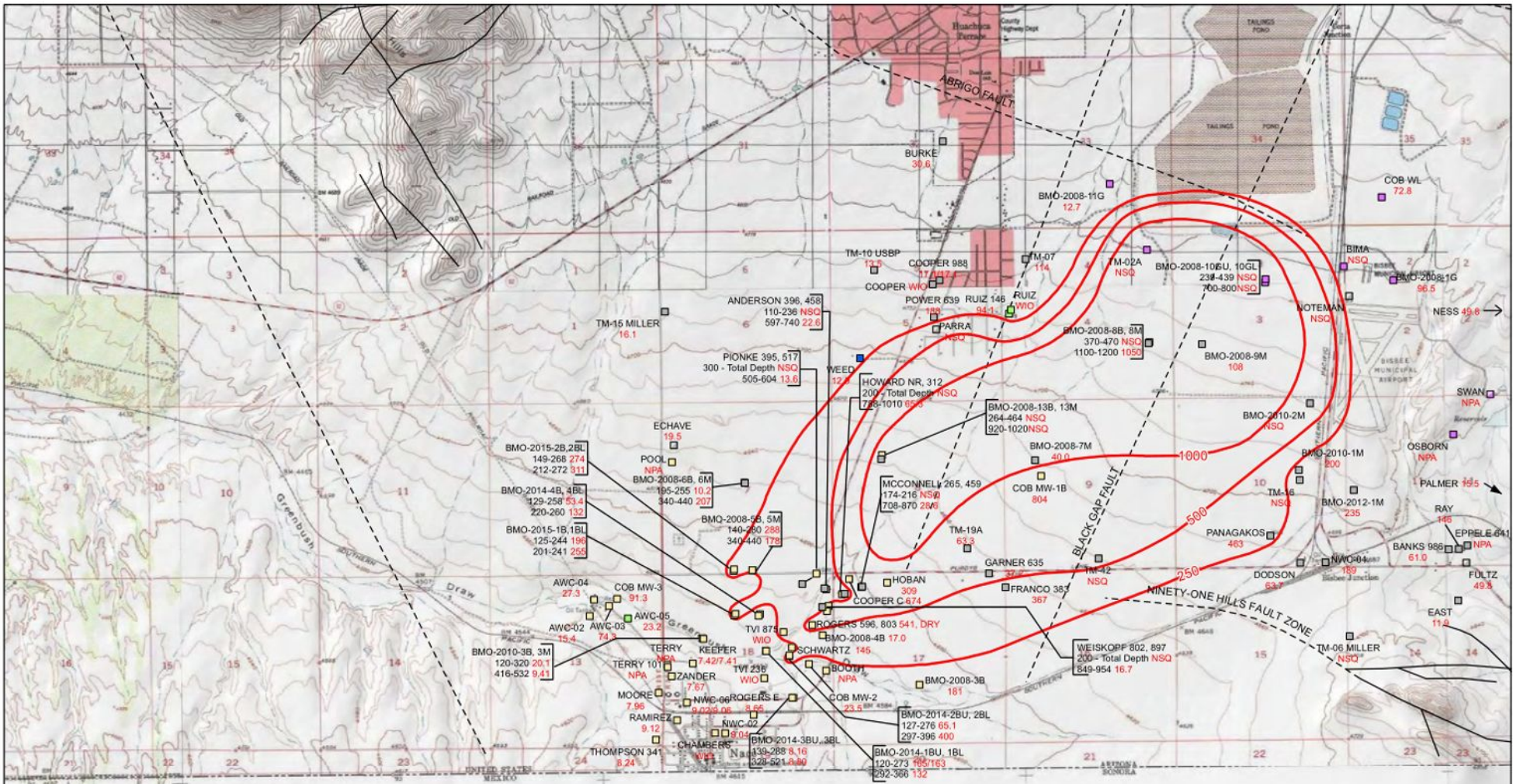
- Screened Formation**
- Basin Fill
  - Basin Fill and Undifferentiated Bisbee Group
  - Undifferentiated Bisbee Group
  - Undifferentiated Bisbee Group - Estimated
  - Undifferentiated Bisbee Group and Glance Conglomerate
  - Glance Conglomerate
  - Glance Conglomerate - Estimated
  - Undifferentiated Bisbee Group - Cintura, Mural Limestone, and Morita Formations

NPA = No Property Access  
 NSQ = Not Scheduled for Quarter  
 WIO = Well Inoperable  
 mg/L = milligrams per liter  
 ft bls = feet below land surface  
 Sulfate contours are based on represented and historical data.  
 Projection: UTM Zone 12N NAD83



Date	1/31/2023	File ID	055038-575
<p><b>FIGURE 5</b>          SULFATE CONCENTRATIONS IN          SITE-WIDE GROUNDWATER SAMPLES          FOR FIRST QUARTER 2022</p>			



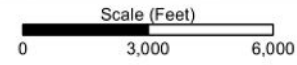


Copyright: © 2013 National Geographic Society. i-cubed

- Legend**
- NWC-02 Well ID
  - 9.04 SO4 Concentration (mg/L)
  - Duplicate results separated by "\*"
  - SO4 Concentration Contour
  - - - Fault (dashed where inferred)
  - Co-located Wells
    - Well ID
    - Screen (ft bls) Sulfate Concentration (mg/L)

- Screened Formation**
- Basin Fill
  - Basin Fill and Undifferentiated Bisbee Group
  - Undifferentiated Bisbee Group
  - Undifferentiated Bisbee Group - Estimated
  - Undifferentiated Bisbee Group and Glance Conglomerate
  - Glance Conglomerate
  - Glance Conglomerate - Estimated
  - Undifferentiated Bisbee Group: Cintura, Mural Limestone, and Monta Formations

NPA = No Property Access  
 NSQ = Not Scheduled for Quarter  
 WIO = Well Inoperable  
 mg/L = milligrams per liter  
 ft bls = feet below land surface  
 Sulfate contours are based on represented and historical data.  
 Projection: UTM Zone 12N NAD83

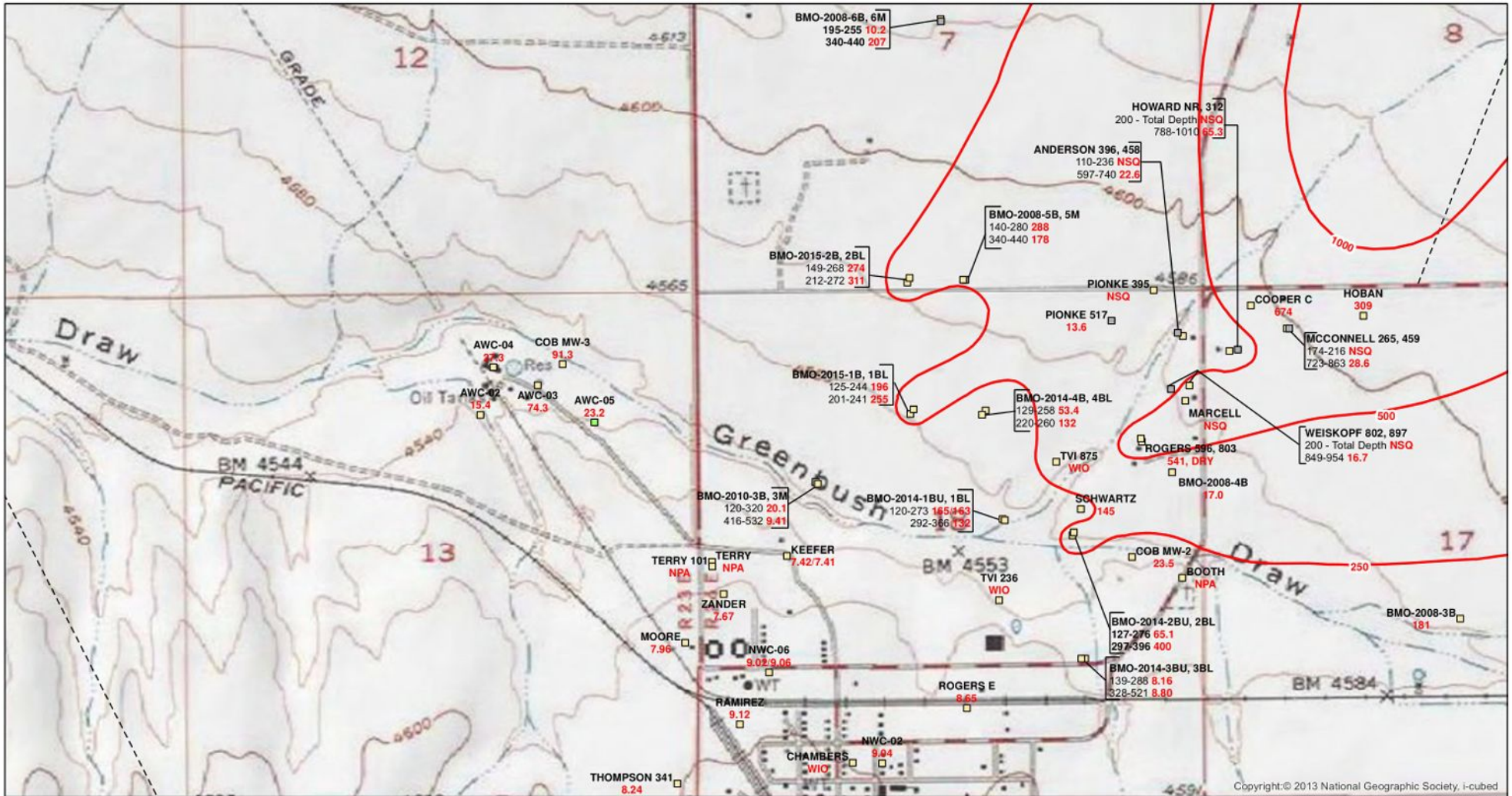


Date 1/31/2023	File ID 055038-579
<p><b>FIGURE 6</b>          SULFATE CONCENTRATIONS IN          SITE-WIDE GROUNDWATER SAMPLES          FOR THIRD QUARTER 2022</p>	









Copyright:© 2013 National Geographic Society, i-cubed

- Legend**
- NWC-02 Well ID
  - 9.04 Sulfate Concentration (mg/L)
  - Duplicate results separated by "/"
  - Sulfate Concentration Contour
  - - - Fault (Inferred)
  - Co-located Wells
    - Well ID
    - Screen (ft bls) Sulfate Concentration (mg/L)

- Screened Formation**
- Basin Fill
  - Basin Fill and Undifferentiated Bisbee Group
  - Undifferentiated Bisbee Group
  - Undifferentiated Bisbee Group - Estimated
  - Undifferentiated Bisbee Group and Glance Conglomerate
  - Glance Conglomerate
  - Glance Conglomerate - Estimated
  - Undifferentiated Bisbee Group: Cintura, Mural Limestone, and Morita Formations

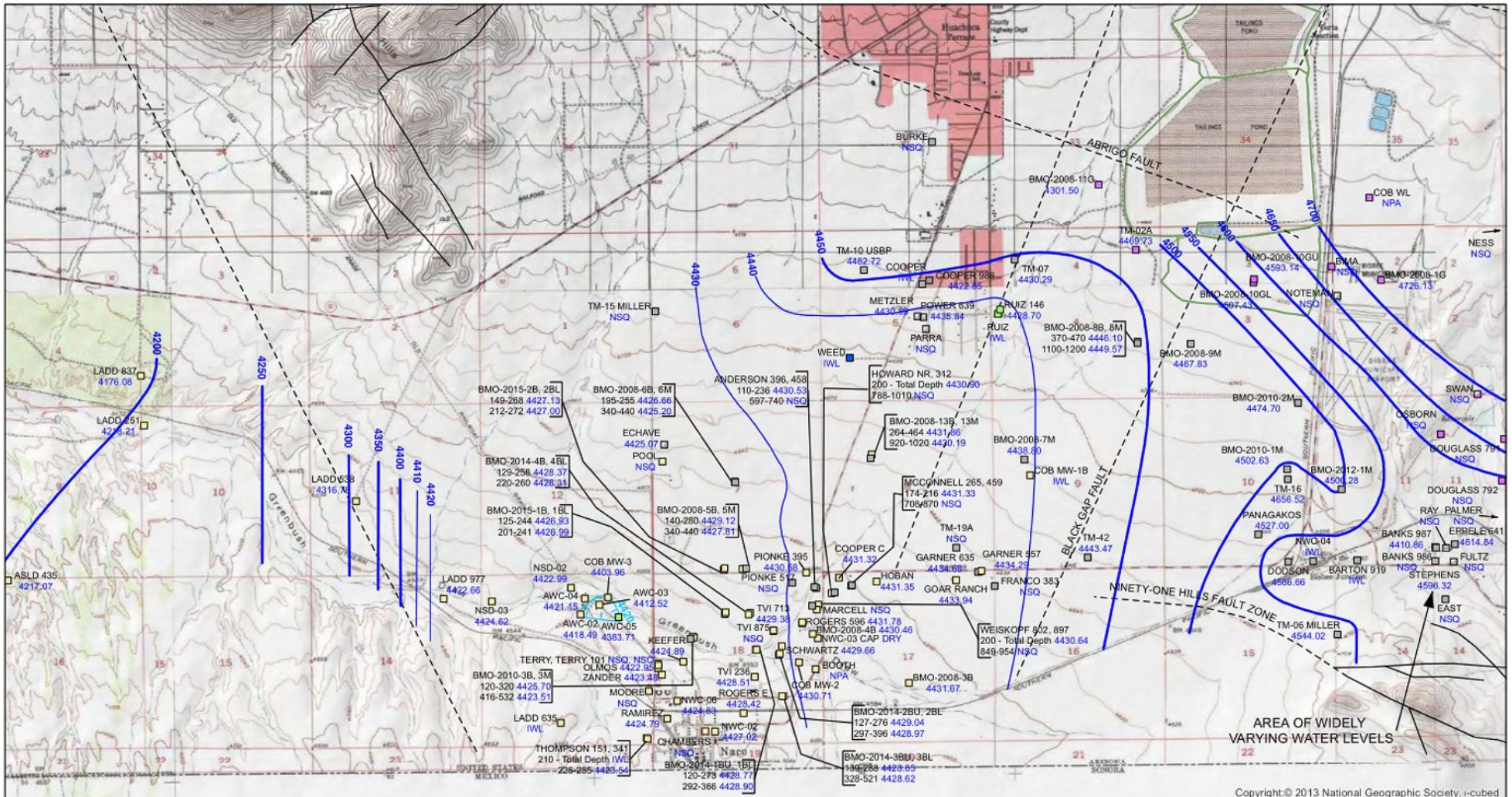
NPA = No Property Access  
 NSQ = Not Scheduled for Quarter  
 WIO = Well Inoperable  
 mg/L = milligrams per liter  
 ft bls = feet below land surface  
 Sulfate contours are based on represented and historical data.

Scale (Feet)  
 0 1,000 2,000  
 Projection: UTM Zone12N  
 NAD83

Date: 1/31/2023	File ID: 055038-580

**FIGURE 8**  
 SULFATE CONCENTRATIONS AT THE WEST EDGE OF THE PLUME FOR THIRD QUARTER 2022



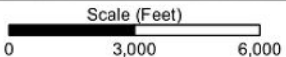


Copyright:© 2013 National Geographic Society, i-cubed

**Legend**

- AWC-05 Well ID  
4383.71 Groundwater Elevation (ft amsl)
- Groundwater Elevation Contours (10 ft)
- Groundwater Elevation Contours (50 ft)  
(dashed where inferred)
- Faults (dashed where inferred)
- CTSA Facility
- Co-located Wells
  - Well ID
  - Screen (ft bls) Water Elevation (ft amsl)
- Screened Formation
  - Basin Fill
  - Basin Fill and Undifferentiated Bisbee Group
  - Undifferentiated Bisbee Group
  - Undifferentiated Bisbee Group - Estimated
  - Undifferentiated Bisbee Group and Giance Conglomerate
  - Giance Conglomerate
  - Giance Conglomerate-Estimated

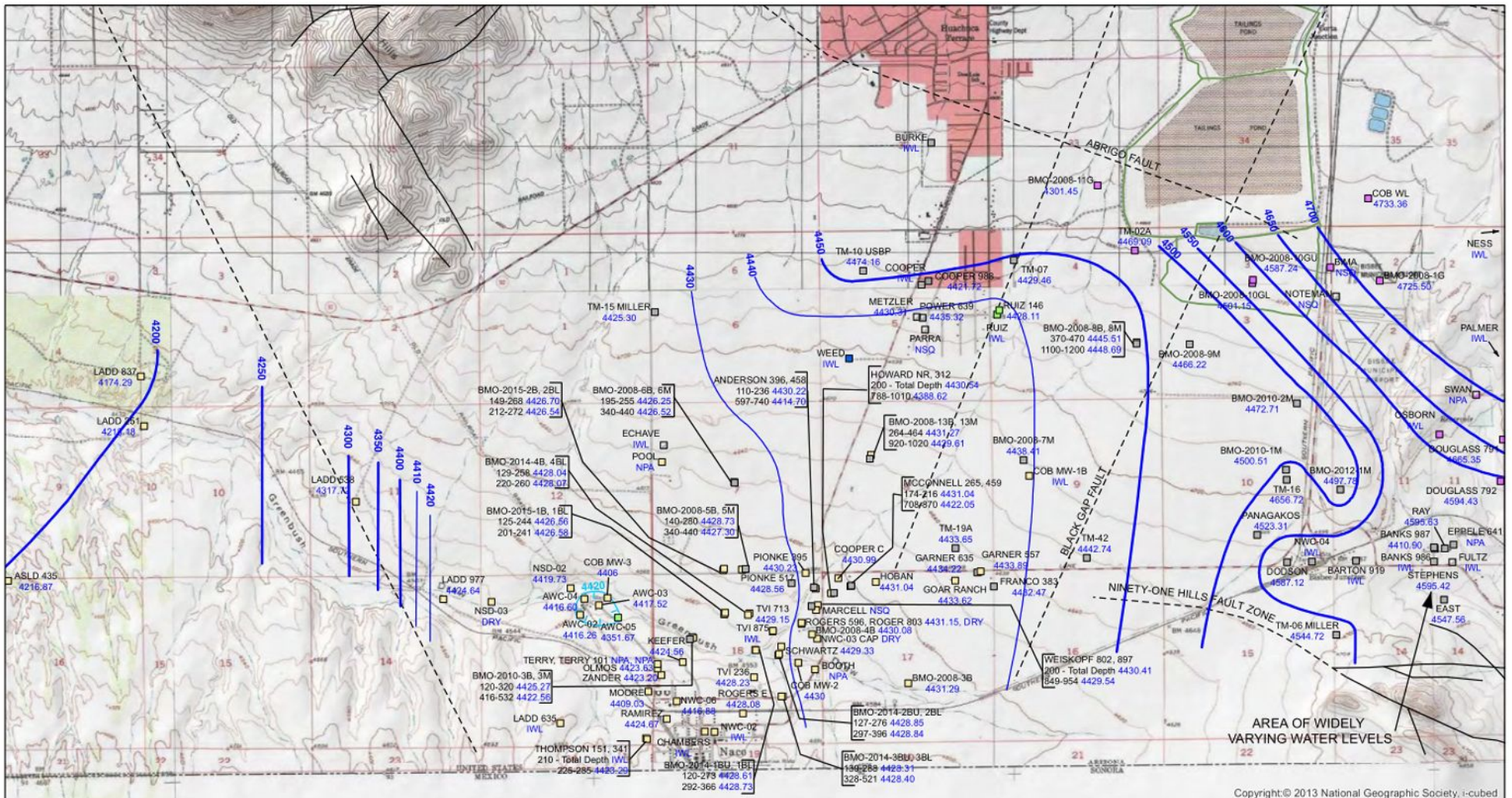
IWL = Inaccessible for Water Level  
 NPA = No Property Access  
 NSQ = Not Scheduled for Quarter  
 ft amsl = feet above mean sea level  
 ft bls = feet below land surface



Projection: UTM Zone 12N NAD83

Date 1/31/2023	File ID 055038-573
<p><b>FIGURE 11</b>          SITE-WIDE          GROUNDWATER ELEVATIONS          FOR FIRST QUARTER 2022</p>	



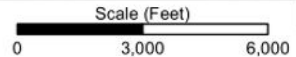


Copyright:© 2013 National Geographic Society, i-cubed

**Legend**

- AWC-05 Well ID
- 4351.67 Groundwater Elevation (ft amsl)
- Groundwater Elevation Contours (10 ft)
- Groundwater Elevation Contours (50 ft) (dashed where inferred)
- - - Faults (dashed where inferred)
- CTSA Facility
- Co-located Wells
- Well ID
- Screen (ft bls) Water Elevation (ft amsl)
- Screened Formation
- Basin Fill
- Basin Fill and Undifferentiated
- Bisbee Group
- Undifferentiated Bisbee Group
- Undifferentiated Bisbee Group - Estimated
- Undifferentiated Bisbee Group and Giance Conglomerate
- Giance Conglomerate
- Giance Conglomerate-Estimated

IWL = Inaccessible for Water Level  
 NPA = No Property Access  
 NSQ = Not Scheduled for Quarter  
 ft amsl = feet above mean sea level  
 ft bls = feet below land surface

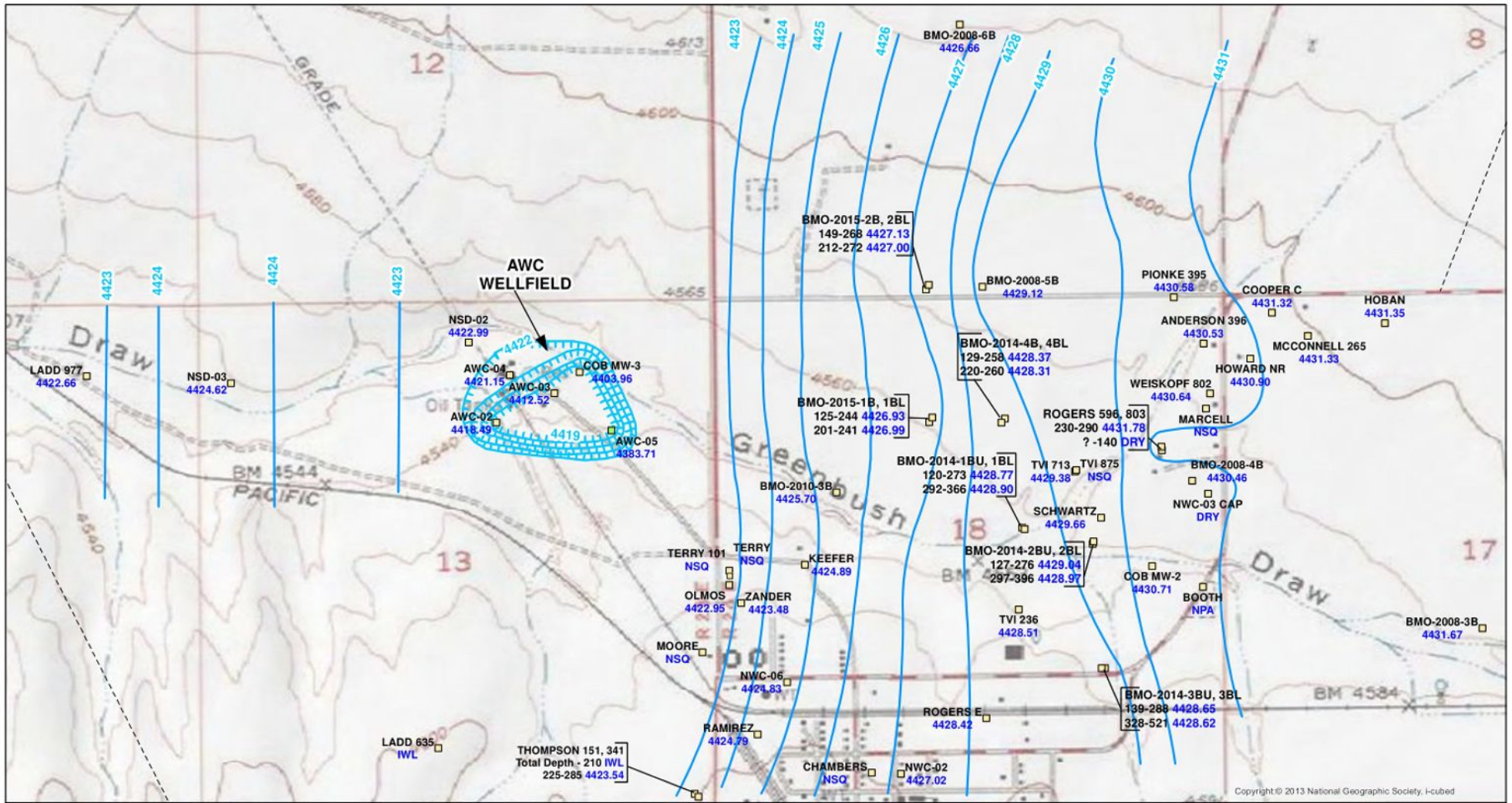


Projection: UTM Zone 12N NAD83

Date	1/31/2023	File ID	055038-577

**FIGURE 12**  
 SITE-WIDE  
 GROUNDWATER ELEVATIONS  
 FOR THIRD QUARTER 2022





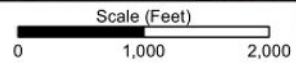
Copyright © 2013 National Geographic Society, I-cubed

**Legend**

- AWC-02 Well ID
- 4418.49 Groundwater Elevation (ft amsl)
- Groundwater Elevation Contour (ft amsl)
- Groundwater Elevation Depression Contour (ft amsl)
- Faults (dashed where inferred)
- Co-located Wells
  - Well ID
  - Screen (ft bls) Water Elevation (ft amsl)

- Screened Formation
  - Basin Fill
  - Basin Fill and Undifferentiated Bisbee Group
  - Undifferentiated Bisbee Group
  - Undifferentiated Bisbee Group - Estimated
  - Undifferentiated Bisbee Group and Glance Conglomerate
  - Glance Conglomerate
  - Glance Conglomerate-Estimated

IWL = Inaccessible for Water Level  
 NPA = No Property Access  
 NSQ = Not scheduled for Quarter  
 ft amsl = feet above mean sea level  
 ft bls = feet below land surface



Date	3/6/2023	File ID	055038-574

**FIGURE 13**  
 BASIN FILL  
 GROUNDWATER ELEVATIONS  
 AT THE WEST EDGE OF THE PLUME  
 FOR FIRST QUARTER 2022

Projection: UTM Zone 12N NAD83



